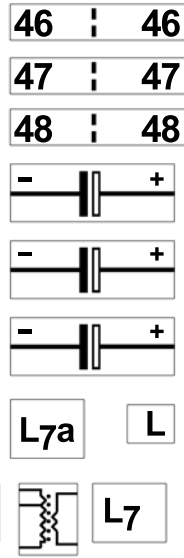


100p	2,7k
100p	10k
330p	22k
1n	39k
1n	100k
1,5n	100k
4,7n	100k
4,7n	220k
4,7n	220k
47n	npn C
100n	npn C
100n	npn C
1k	npn C
	B E

B E	34	:	34	46	:	46
B E	35	:	35	47	:	47
B E	36	:	36	48	:	48
L6	↖	43	:	43		
L6a	↖	43	:	43		
L6b	↖	44	:	44		
L6c	↖	44	:	44		
L6d	↖	45	:	45		
L6e	↖	45	:	45		
L6f	↖	45	:	45		
↗	↘					
- 10μF	+					
- 10μF	+					
- 10μF	+					
15kΩ						

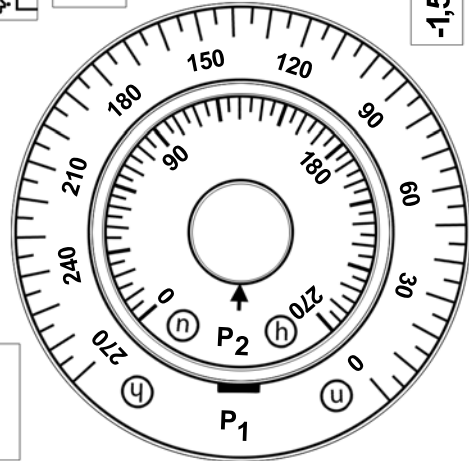
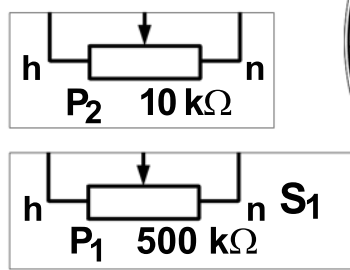
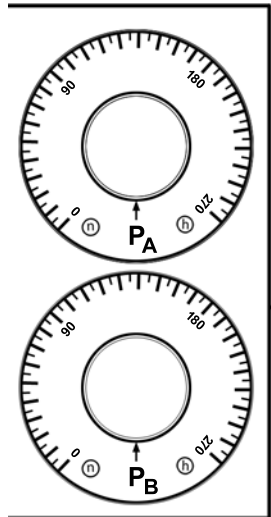


1	2	3	4	5
1	2	3	4	5
1	2	3	4	5

XU Bestell.-Nr. 61-4640.7

-1,5V
-3,0V
-4,5V
-6,0V
-7,5V
-9,0V

zur Schaltermarkierung



L7b	L69	↖	106	:	106	111	:	111
	L9	↖	102	:	102	108	:	108
	2	3	104	:	104	109	:	109
L7C			105	:	105	110	:	110
			105	:	105	110	:	110
			105	:	105	110	:	110

SA SA2 SA1 SB SB2 SB1 1 Tas² + -4,5V -9,0V